

FENDT

BLOCKS, PAVERS & WALL STONES



Quality Products for over 80 Years.

22005 Gill Rd. / Farmington Hills, MI 48335-4646 / (248) 474-3211 3285 W. Liberty / Ann Arbor, MI 48103-9795 / (734) 663-4277

www.fendtproducts.com

FENDT

BLOCKS, PAVERS & WALL STONES

2013 CATALOG





BLOCKS, PAVERS & WALL STONES

If Your Mind Imagines It — Fendt Can Create It.

Fendt block, paver, and wall stone products help turn thoughts into expressions and houses into dream homes.

Whether you picture an exquisite patio, sidewalk, driveway, pool deck or retaining wall, Fendt’s unique custom concrete paver and wall systems can add value and natural beauty to any home or business.

Fendt products give you the freedom to design ideas that inspire your imagination and enhance your landscape environment with the natural beauty and old world charm of winding pathways, bi-level patios and enchanting stairways. Go wild. Create a world of wonder, a lasting showcase to inspire for years to come. At Fendt, we’re all about enhancing the beauty of imagination.

COVER PHOTO

WALKWAY:
OLD WORLD VINTAGE – SEASHELL BLEND
BORDER: VINTAGE – WALNUT BLEND

DECK:
OLD WORLD VINTAGE – WALNUT BLEND
BORDER: OLD WORLD VINTAGE – SEASHELL BLEND

STEP:
24” CAP – WALNUT BLEND

FIRE PIT:
OLD WORLD FIRE PIT BLOCK – WALNUT BLEND

CONTENTS

INTRODUCTION TO PAVERS 3

Idea Gallery 4-7

Old World Holland 4x8 8-9

Old World Random 10-11

Old World Vintage 12-15

Spectrum Elite — Accent Colors 16-17

Vintage 18-21

Vintage Patterns 22-23

Symetry 24-26

Symetry Patterns 27

Holland 4x8 28-29

Holland Series 30-31

Cobblestone 32

Special Order Textures 33

Standard Paver Color Chart 34

Spectrum Collection Color Chart 35

Spectrum Collection 36-37

Custom Color Projects 38-39

Special Order Pavers 40-43

Installation Instructions 44

INTRODUCTION TO ENVIRONMENTAL PRODUCTS 45

Permeable Pavers 46-47

Monoslab® Grass Paver 48-49

Geolink Erosion Control 50

INTRODUCTION TO WALL STONES 51

Glenstone 52

Garden Wall 53

Planter Wall 54

Verazzo Stone™ 55-57

Stonegate 58-59

Country Manor® 60-65

Keystone® Straight Split 66-67

Keystone Sculptured Split 68-69

Keystone Hewn Stone 70-71

Fire Pit Block 72

Wall Caps & Stair Treads 73-74

Landscape Wall Colors 75

Wall Design Details and Charts 76-79

Installation Instructions 80

WARRANTY 81

REFERENCE GUIDE 82-83



Fendt is a proud member of both the Interlocking Concrete Pavement Institute (ICPI) and the National Concrete Masonry Association (NCMA). These organizations are recognized as the leading national associations for the advancement of properly designed and installed concrete paving stones and segmental retaining walls respectively. We recommend that installations of our quality products follow the accepted installation standards of the ICPI and NCMA.



FENDT PAVING STONES

The technology used in the creation of concrete interlocking paving stones originated in Germany after the Second World War. New highly efficient machinery came into use for manufacturing a variety of shapes and integrated colors of quality paving stones. The technology soon spread throughout Europe, where concrete pavers were used to rebuild and add beauty to streets, sidewalks and homes.

Fendt is a local pioneer in the design and production of such innovative and elegant paving stones, offering a full line of interlocking concrete pavers for decorating driveways, sidewalks, patios, pool decks – whatever you put your mind to.

Fendt's high-density, high-strength concrete pavers are guaranteed to exceed stringent American Society for Testing and Materials (ASTM) standards. To obtain such a high level of strength and durability, the paving stone material is tightly compacted during the manufacturing process, minimizing the amount of moisture absorbed and the effects of repeated freeze and thaw cycles. From initial design to manufacture, Fendt concrete paving stones are created with beauty in mind and made to last.

Beauty. Elegance. Enduring quality.

That's been the commitment from three generations of Fendt family members for more than 80 years.



OLD WORLD HOLLAND – PAGE 8



OLD WORLD RANDOM – PAGE 10



OLD WORLD VINTAGE – PAGE 12



VINTAGE – PAGE 18



SYMETRY – PAGE 24



HOLLAND 4x8 – PAGE 28



HOLLAND SERIES – PAGE 30

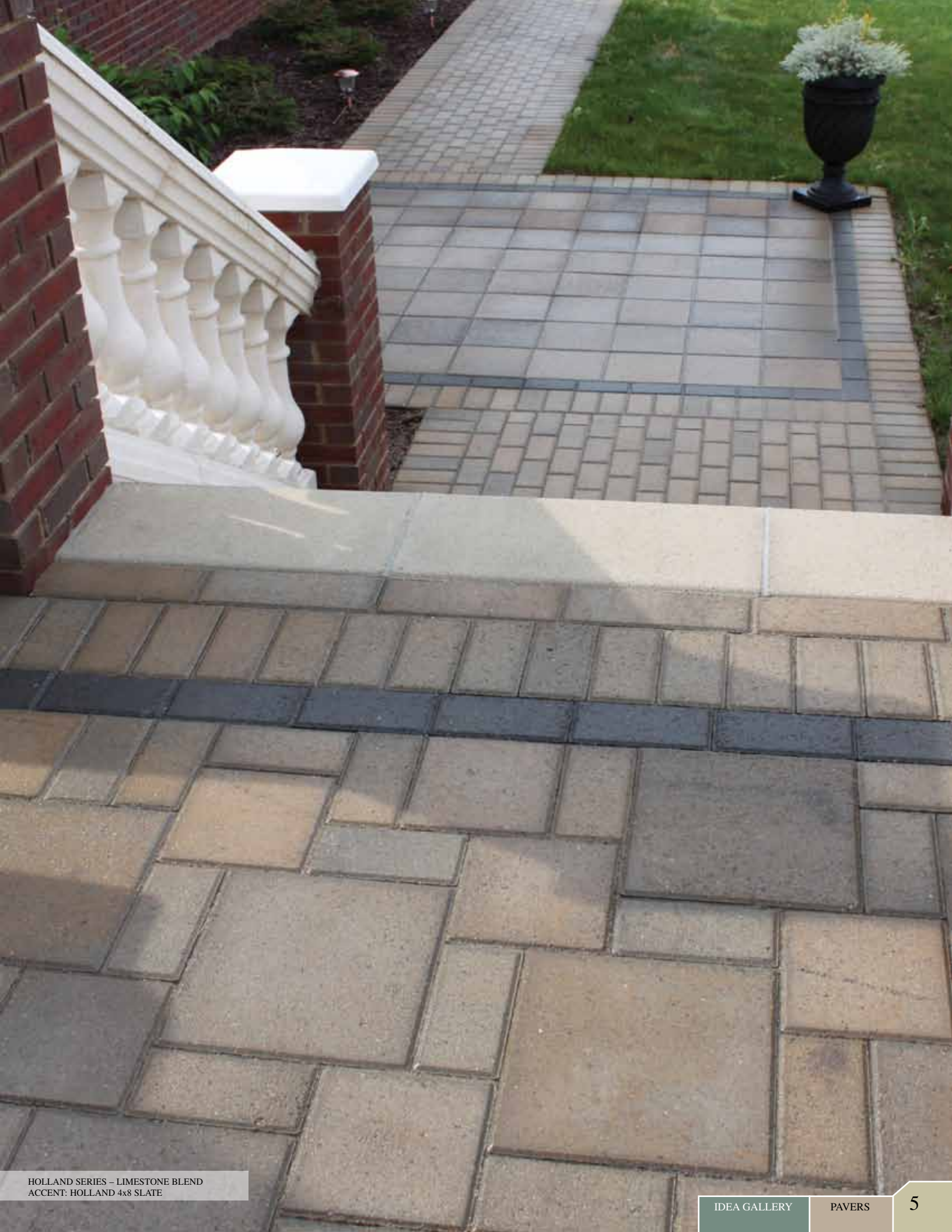


COBBLESTONE – PAGE 32

IDEA GALLERY



OLD WORLD VINTAGE – SEASHELL BLEND
ACCENT: VINTAGE WALNUT BLEND



HOLLAND SERIES – LIMESTONE BLEND
ACCENT: HOLLAND 4x8 SLATE

IDEA GALLERY





OLD WORLD VINTAGE – SEASHELL BLEND
OLD WORLD VINTAGE – WALNUT BLEND
STEP: 24" CAP – WALNUT BLEND
FIRE PIT BLOCK: LIMESTONE BLEND

OLD WORLD HOLLAND 4x8

More and more today, homeowners are interested in creating the look and feel of old world Europe in their landscaping projects. With their rugged and weathered appearance, Old World Holland tumbled pavers deliver the look with style and distinction.



◀ OLD WORLD HOLLAND 4x8 – RUSTIC BLEND

OLD WORLD HOLLAND 4x8 – RUSTIC BLEND ▶

Old World Holland tumbled pavers are available in 4" x 8" size. Inventoried colors include Rustic Blend, Antique Blend, Walnut Blend, Mossy Oak Blend, Limestone Blend, Grindstone Blend, and Slate. All Fendt pavers are tumbled, not machine-faced.

OLD WORLD HOLLAND 4x8 – RUSTIC BLEND ▶



OLD WORLD HOLLAND 4x8

Units per sq. ft.: 4.5
Sq. ft. per cube: 108
Weight per sq. ft.: 28 lbs
Weight per cube: 3,024 lbs

Sq. ft. per strap: 18
Soldier Coursing:
Per Strap – 27 lineal feet
Per Cube – 162 lineal feet



O.W. RUSTIC BLEND



O.W. ANTIQUE BLEND



O.W. WALNUT BLEND



O.W. LIMESTONE BLEND



O.W. GRINDSTONE BLEND



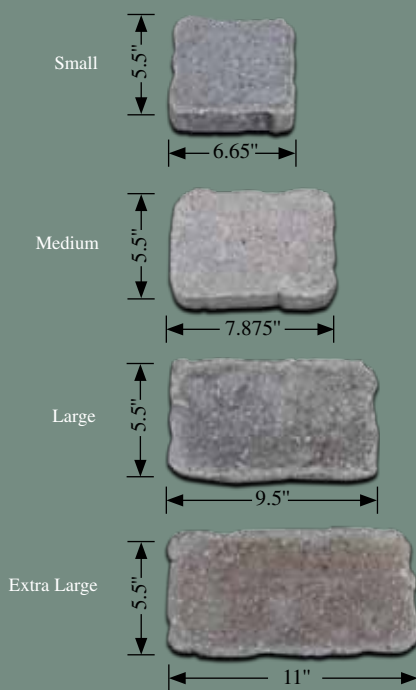
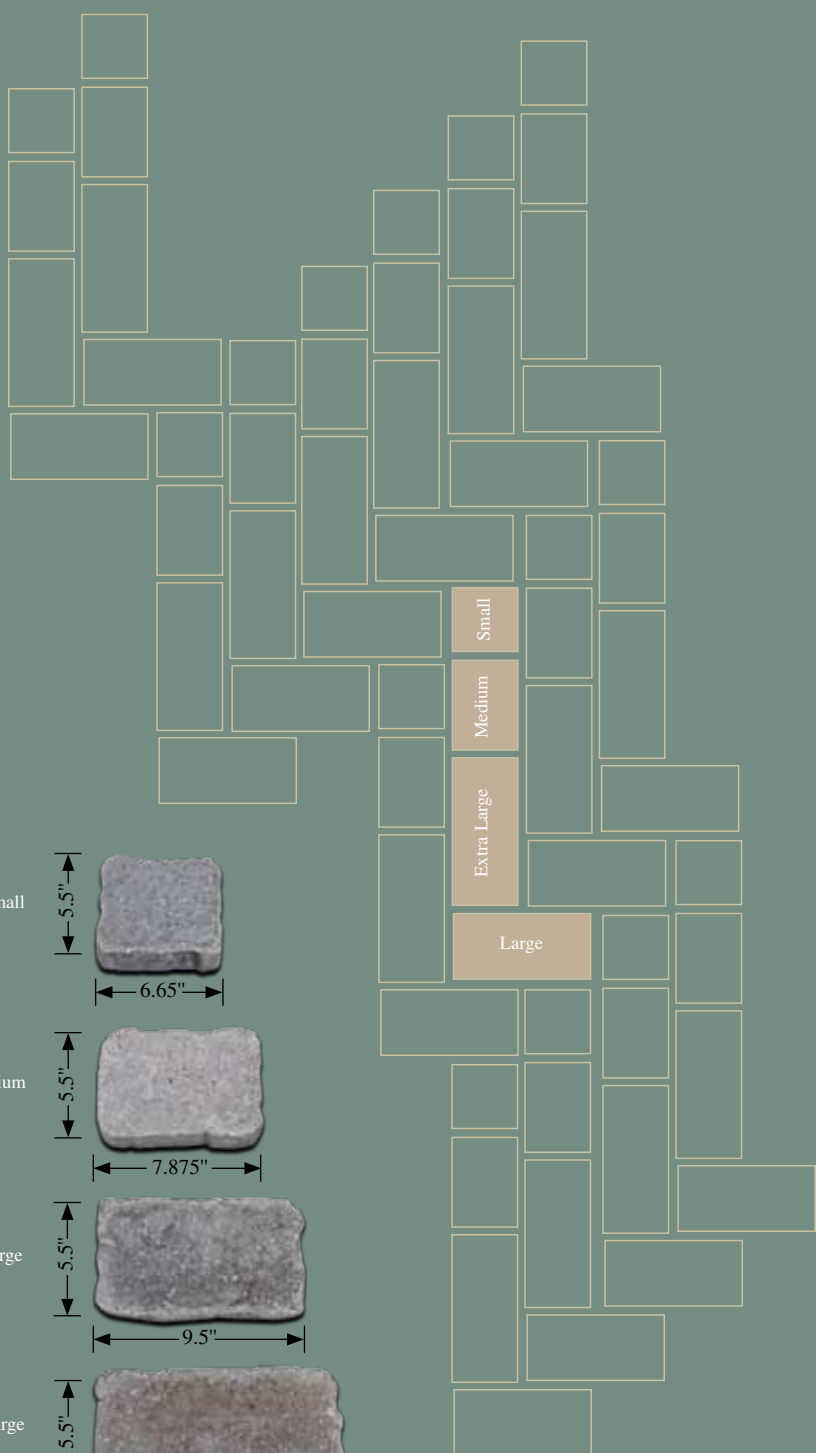
O.W. MOSSY OAK BLEND



O.W. SLATE

OLD WORLD RANDOM

For the ultimate in old world style and warmth, Fendt offers Old World Random tumbled pavers. With their random sizes and rugged, weathered appearance, Old World Random pavers bring a touch of distinction to any landscaping project.



OLD WORLD RANDOM – WALNUT BLEND ▶

◀ OLD WORLD RANDOM – WALNUT BLEND



Sold by Sets – Pieces/Set: 4
 Sq. ft. per Set: 1.33
 Sq. ft. per Pallet: 96
 Sets/Pallet: 72
 Weight/Pallet: 2,407 lbs



O.W. WALNUT BLEND



O.W. LIMESTONE BLEND

OLD WORLD VINTAGE

Homeowners looking for the warmth and charm of old world Europe are naturally drawn to Old World Vintage pavers. With their distinctive and weathered appearance, Old World Vintage pavers look as though they have been unearthed from an ancient European village.





O.W. RUSTIC BLEND



O.W. WALNUT BLEND



O.W. LIMESTONE BLEND



O.W. BURGUNDY BLEND



O.W. MOSSY OAK BLEND



O.W. SEASHELL BLEND



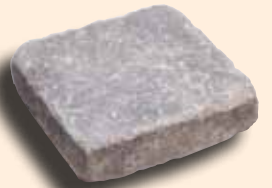
O.W. POLAR ASH

- ◀ OLD WORLD VINTAGE
 - LIMESTONE BLEND
 - STEPS: HOLLAND 4x8
 - SLATE
 - WALLS: OLD WORLD STONEGATE
 - LIMESTONE BLEND

OLD WORLD VINTAGE



Large Square



Double Large Rectangle



XL Rectangle



Large Rectangle



Square



◀ OLD WORLD VINTAGE – WALNUT BLEND
BORDER: OLD WORLD VINTAGE – SEASHELL BLEND

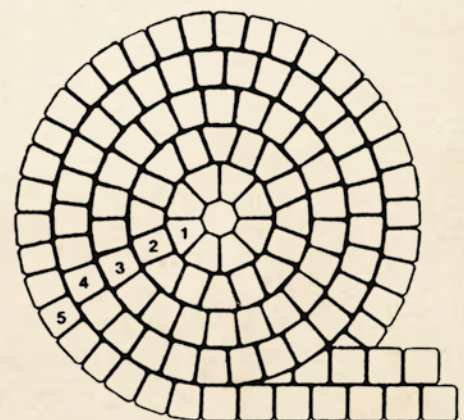
OLD WORLD VINTAGE SERIES



LARGE SQUARE CUBE		UNITS PER SQ. FT.	UNITS PER LAYER	SQ. FT. PER LAYER	UNITS PER CUBE	SQ. FT. PER CUBE	SQ. FT. PER STRAP	WEIGHT PER SQ. FT.		
	Large Square 9½" x 9½" x 2⅜"	1.65	20	12.1	160	97	19.4	28		
DOUBLE LARGE RECTANGLE CUBE		UNITS PER SQ. FT.	UNITS PER LAYER	SQ. FT. PER LAYER	UNITS PER CUBE	SQ. FT. PER CUBE	SQ. FT. PER STRAP	WEIGHT PER SQ. FT.		
	Double Large Rectangle 7⅞" x 9½" x 2⅜"	2.2	25	11.36	200	91	18.2	28		
XL RECTANGLE CUBE		UNITS PER SQ. FT.	UNITS PER LAYER	SQ. FT. PER LAYER	UNITS PER CUBE	SQ. FT. PER CUBE	SQ. FT. PER STRAP	WEIGHT PER SQ. FT.	SOLDIER COURSING LINEAL FOOTAGE	
	Extra Large Rectangle 9½" x 4¾" x 2⅜"	3.1	35	11.2	280	90	17.92	28	CUBE	STRAP
									111	22.2
LARGE RECTANGLE CUBE		UNITS PER SQ. FT.	UNITS PER LAYER	SQ. FT. PER LAYER	UNITS PER CUBE	SQ. FT. PER CUBE	SQ. FT. PER STRAP	WEIGHT PER SQ. FT.	SOLDIER COURSING LINEAL FOOTAGE	
	Large Rectangle 7⅞" x 4¾" x 2⅜"	4.2	42	10.0	336	80	13.33	28	CUBE	STRAP
									133	22.2
SQUARE CUBE		UNITS PER SQ. FT.	UNITS PER LAYER	SQ. FT. PER LAYER	UNITS PER CUBE	SQ. FT. PER CUBE	SQ. FT. PER STRAP	WEIGHT PER SQ. FT.		
	Square 4¾" x 4¾" x 2⅜"	6.3	63	10.0	504	80	8.89	28		
CIRCLE BOX (1 CIRCLE PER BOX)		UNITS PER SQ. FT.	UNITS PER LAYER	SQ. FT. PER LAYER	UNITS PER CUBE	SQ. FT. PER CUBE	SQ. FT. PER STRAP	WEIGHT PER SQ. FT.		
	Square 4¾" x 4¾" x 2⅜"	6.3			56	8.85		28		
	Large Circle 4⅞" x 4⅞" x 2⅜"	8.3			120	14.45		28		
	Small Circle 4⅞" x 4⅞" x 2⅜"	8.7			16	1.8		28		
	Half Stone 4¾" x 3⅝" x 2⅜"	8.4			84	10		28		
	Center Stone 4¾" x 3⅝" x 2⅜"	9.0			4	0.4		28		
Totals for Cube					280	35.5		1,988 lbs.		

LAYING A CIRCLE

ROW NUMBER	SMALL CIRCLE	LARGE CIRCLE	HALF STONE	SQUARE STONE	DIAMETER (INCHES)	SEQUENCE
1	8	—	—	—	14½"	Next to each other
2	8	—	8	—	23½"	SC, HS, SC, HS, etc.
3	—	24	—	—	33	Next to each other
4	—	24	7	1	42½"	LC, LC, LC, HS, LC, LC, LC, HS, etc., plus a square at random
5	—	24	16	—	52	HS, LC, HS, LC, LC, HS, LC, HS, LC, LC, etc.
6	—	24	24	—	61½"	LC, HS, LC, HS, etc.
7	—	22	23	9	71	LC, HS, LC, HS, Square, LC, HS, LC, HS, Square, etc.



Note: The extra square stones left from the Circle Cube can be used to enlarge the circle and to complete your project used by themselves or with the stones from the Square/Small Rectangle (SSR) Cube and Large Rectangle (LR) Cube.

SPECTRUM ELITE – ACCENT COLORS



JET BLACK

COFFEE



JADE

TITANIUM



RUBY

SUEDE



ELITE ACCENT COLORS INVENTORIED IN
OLD WORLD VINTAGE EXTRA LARGE RECTANGLE



▼ BORDER: COFFEE – FIELD: LIMESTONE BLEND

▲ BORDER: JADE – FIELD: MOSSY OAK





▼ BORDER: COFFEE – FIELD: SEASHELL BLEND

▲ BORDER: JET BLACK – FIELD: LIMESTONE BLEND



VINTAGE



▲ VINTAGE – LIMESTONE BLEND

Set your imagination free with the versatility of Fendt Vintage pavers. Create sweeping lines and dramatic design configurations that will delight you and your family for years to come.

◀ VINTAGE – RUSTIC BLEND

VINTAGE – RUSTIC BLEND ▶



RUSTIC BLEND



ANTIQUE BLEND



FOREST BLEND



SANDSTONE BLEND



WALNUT BLEND



LIMESTONE BLEND



MAPLEWOOD BLEND

VINTAGE



VINTAGE SERIES



Large Square



Double Large Rectangle



XL Rectangle



Large Rectangle



Square



Small Rectangle



Half Stone



Small Circle



Large Circle



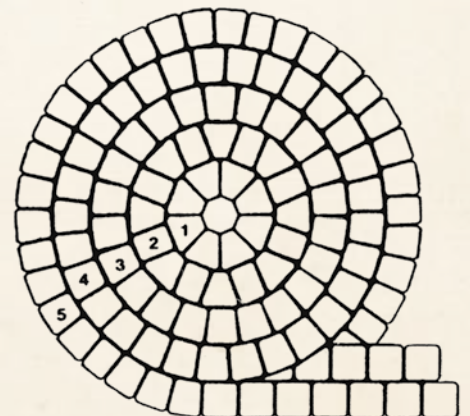
Center Stone

LARGE SQUARE CUBE		UNITS PER SQ. FT.	UNITS PER LAYER	SQ. FT. PER LAYER	UNITS PER CUBE	SQ. FT. PER CUBE	SQ. FT. PER STRAP	WEIGHT PER SQ. FT.		
	Large Square 9½" x 9½" x 2⅜"	1.65	20	12.1	160	97	19.4	28		
DOUBLE LARGE RECTANGLE CUBE		UNITS PER SQ. FT.	UNITS PER LAYER	SQ. FT. PER LAYER	UNITS PER CUBE	SQ. FT. PER CUBE	SQ. FT. PER STRAP	WEIGHT PER SQ. FT.		
	Double Large Rectangle 7⅞" x 9½" x 2⅜"	2.2	25	11.36	200	91	18.2	28		
XL RECTANGLE CUBE		UNITS PER SQ. FT.	UNITS PER LAYER	SQ. FT. PER LAYER	UNITS PER CUBE	SQ. FT. PER CUBE	SQ. FT. PER STRAP	WEIGHT PER SQ. FT.	SOLDIER COURSING LINEAL FOOTAGE	
	Extra Large Rectangle 9½" x 4¾" x 2⅜"	3.1	35	11.2	280	90	17.92	28	CUBE	STRAP
									111	22.2
LARGE RECTANGLE CUBE		UNITS PER SQ. FT.	UNITS PER LAYER	SQ. FT. PER LAYER	UNITS PER CUBE	SQ. FT. PER CUBE	SQ. FT. PER STRAP	WEIGHT PER SQ. FT.	SOLDIER COURSING LINEAL FOOTAGE	
	Large Rectangle 7⅞" x 4¾" x 2⅜"	4.2	42	10.0	336	80	13.33	28	CUBE	STRAP
									133	22.2
SQUARE & SMALL RECTANGLE CUBE (Sold in ratio of 3 squares to 1 small rectangle only)		UNITS PER SQ. FT.	UNITS PER LAYER	SQ. FT. PER LAYER	UNITS PER CUBE	SQ. FT. PER CUBE	SQ. FT. PER STRAP	WEIGHT PER SQ. FT.		
	Square 4¾" x 4¾" x 2⅜"	6.3	54	8.5	432	68.6	8.89	28		
	Small Rectangle 4¾" x 2¼" x 2⅜"	12.6	18	1.4	144	11.4		28		
Totals for Cube			72		576	80		2,440 lbs.		
CIRCLE CUBE (Sold in full and half cubes only - 2 circles per cube)		UNITS PER SQ. FT.	UNITS PER LAYER	SQ. FT. PER LAYER	UNITS PER CUBE	SQ. FT. PER CUBE	SQ. FT. PER STRAP	WEIGHT PER SQ. FT.		
	Square 4¾" x 4¾" x 2⅜"	6.3	14	2.2	112	17.7		28		
	Large Circle 4⅞" x 4⅞" x 2⅜"	8.3	30	3.6	240	28.9		28		
	Small Circle 4⅞" x 4⅞" x 2⅜"	8.7	4	0.5	32	3.6		28		
	Half Stone 4¾" x 3⅝" x 2⅜"	8.4	21	2.5	168	20		28		
	Center Stone 4¾" x 3⅝" x 2⅜"	9.0	1	0.1	8	0.8		28		
Totals for Cube			70		560	71		1,988 lbs.		

LAYING A CIRCLE

ROW NUMBER	SMALL CIRCLE	LARGE CIRCLE	HALF STONE	SQUARE STONE	DIAMETER (INCHES)	SEQUENCE
1	8	—	—	—	14⅞"	Next to each other
2	8	—	8	—	23½"	SC, HS, SC, HS, etc.
3	—	24	—	—	33	Next to each other
4	—	24	7	1	42½"	LC, LC, LC, HS, LC, LC, LC, HS, etc., plus a square at random
5	—	24	16	—	52	HS, LC, HS, LC, LC, HS, LC, HS, LC, LC, etc.
6	—	24	24	—	61½"	LC, HS, LC, HS, etc.
7	—	22	23	9	71	LC, HS, LC, HS, Square, LC, HS, LC, HS, Square, etc.

Note: The extra square stones left from the Circle Cube can be used to enlarge the circle and to complete your project used by themselves or with the stones from the Square/Small Rectangle (SSR) Cube and Large Rectangle (LR) Cube.

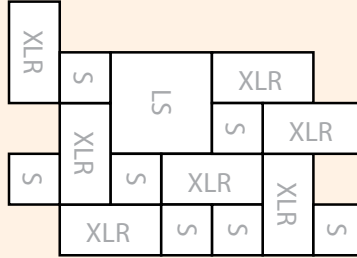


VINTAGE PATTERNS

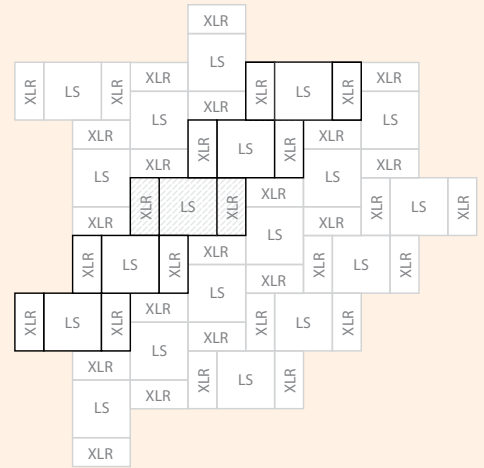
LEGEND: S (Square) LR (Large Rectangle) XLR (Extra Large Rectangle)
 LS (Large Square) DLR (Double Large Rectangle)



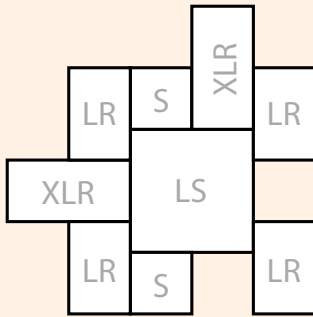
PATTERN 1
 2 DLR 34%
 1 LS 22%
 2.83 square feet 4 XLR 44%



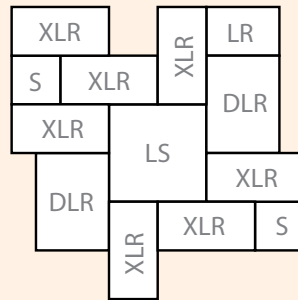
PATTERN 5
 7 S 28%
 7 XLR 56%
 3.91 square feet 1 LS 16%



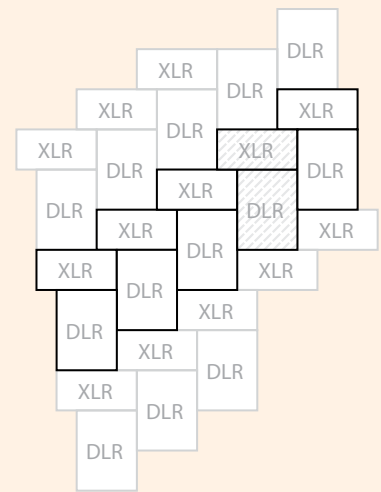
PATTERN 9
 2 XLR 50%
 1.25 square feet 1 LS 50%



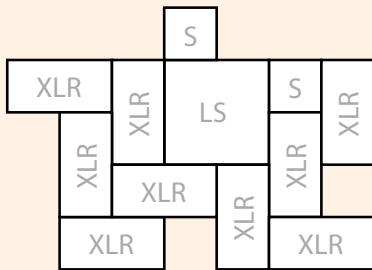
PATTERN 2
 2 S 12%
 4 LR 38%
 2.52 square feet 2 XLR 25%
 1 LS 25%



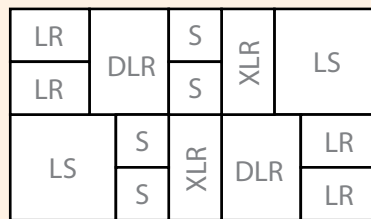
PATTERN 6
 2 S 7%
 1 LR 6%
 4.32 square feet 7 XLR 51%
 2 DLR 22%
 1 LS 14%



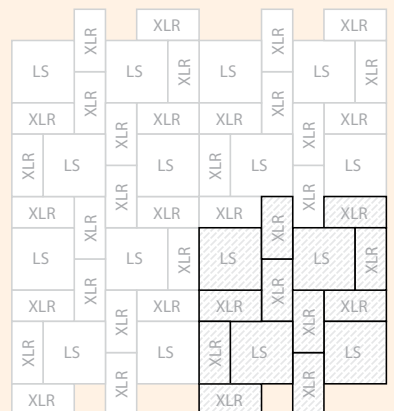
PATTERN 10
 .79 square feet 1 XLR 40%
 1 DLR 60%



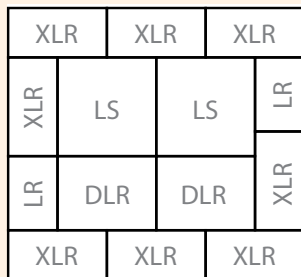
PATTERN 3
 9 XLR 75%
 1 LS 17%
 3.75 square feet 2 S 8%



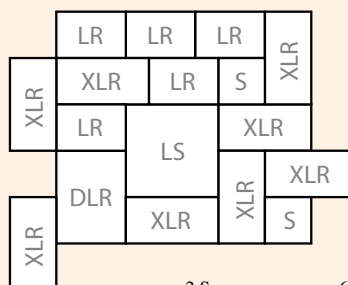
PATTERN 7
 4 S 14%
 4 LR 22%
 4.41 square feet 2 XLR 14%
 2 DLR 22%
 2 LS 28%



PATTERN 11
 5.62 square feet 10 XLR 56%
 4 LS 44%

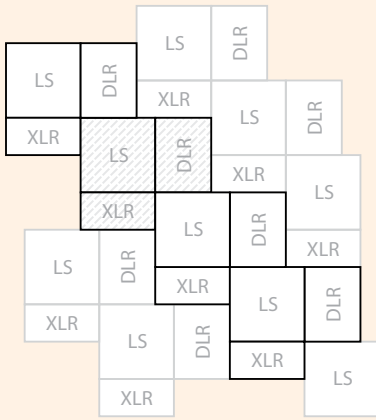


PATTERN 4
 2 LR 9%
 8 XLR 48%
 2 DLR 19%
 5.18 square feet 2 LS 24%



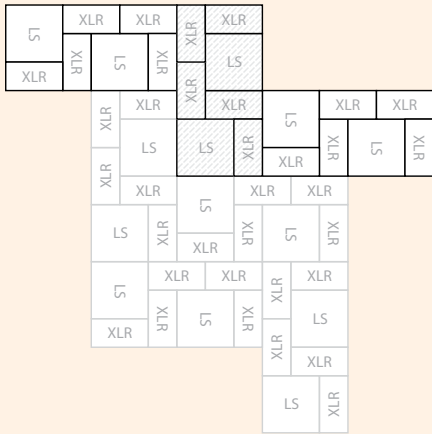
PATTERN 8
 2 S 6%
 5 LR 24%
 5.10 square feet 8 XLR 49%
 1 DLR 9%
 1 LS 12%

SIDEWALK PATTERNS



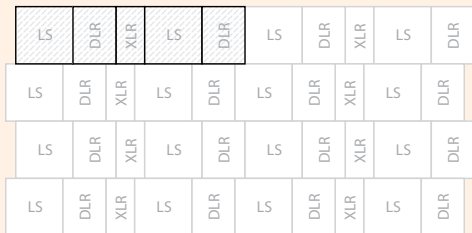
PATTERN 12
1.41 square feet

- 1 XLR 22%
- 1 DLR 34%
- 1 LS 44%



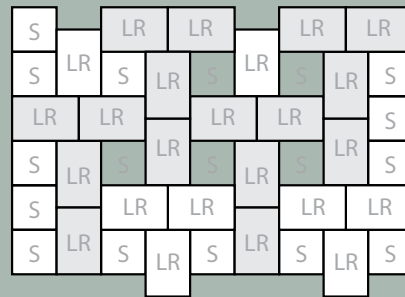
PATTERN 13
2.81 square feet

- 5 XLR 56%
- 2 LS 44%



PATTERN 14
2.51 square feet

- 2 LS 50%
- 2 DLR 38%
- 1 XLR 12%



SIDEWALK PATTERN 1
8.48 square feet

- 18 S 33%
- 24 LR 67%



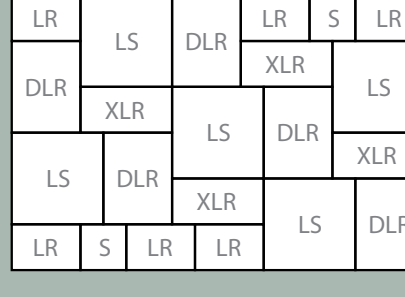
SIDEWALK PATTERN 2
8.48 square feet

- 2 S 4%
- 14 XLR 53%
- 6 LS 43%



SIDEWALK PATTERN 3
8.48 square feet

- 2 S 4%
- 6 LR 17%
- 9 XLR 33%
- 3 DLR 17%
- 4 LS 29%



SIDEWALK PATTERN 4
8.48 square feet

- 2 S 3%
- 6 LR 17%
- 4 XLR 15%
- 5 DLR 28%
- 5 LS 37%

	SQ. FT. PER CUBE	UNITS PER SQ. FT.	UNITS PER CUBE	SQ. FT. PER STRAP
Square (O.W. only)	80	6.3	198	8.89
Square/Small Rectangle	80		576	8.89
Large Rectangle	80	4.2	336	13.33
Extra Large Rectangle	90	3.1	280	17.92
Double Large Rectangle	91	2.2	200	18.2
Large Square	97	1.6	160	19.4

SYMETRY

When you're striving for distinctiveness and a custom look, consider Symetry pavers — a Fendt original shape. Use Symetry pavers alone or with Fendt 6" x 6" pavers to create a multitude of custom designs.



▲ SYMETRY – CUSTOM COLOR

▶ VENETIAN PARQUET PATTERN – AUTUMN BLEND WITH BROWN SQUARES

◀ EMBASSY ROW PATTERN – WALNUT BLEND WITH BROWN SQUARES

Fendt Symetry pavers offer the long-lasting quality and durability that has been a hallmark of Fendt products for 80 years.



SYMETRY

Units per sq. ft.: 3.4
 Sq. ft. per cube: 84
 Weight per sq. ft.: 28 lbs
 Weight per cube: 2,352 lbs
 Sq. ft. per strap: 21



6" x 6" SQUARE

Units per sq. ft.: 4.0
 Sq. ft. per cube: 92
 Weight per sq. ft.: 28 lbs
 Weight per cube: 2,576 lbs
 Sq. ft. per strap: 13.14



Symetry Colors



RUSTIC BLEND



ANTIQUE BLEND



AUTUMN BLEND



WALNUT BLEND

6" x 6" Square Colors



SLATE

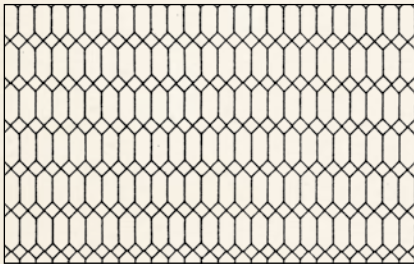


BROWN



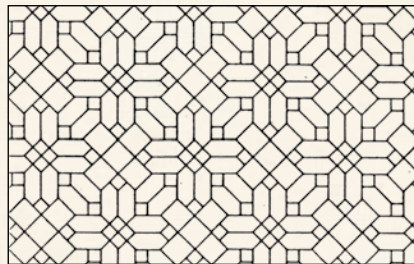
SYMETRY

SYMETRY® PATTERNS (SHOWN WITH 6" x 6")



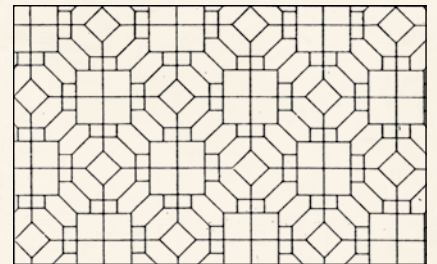
Diamond Run Pattern

100% SYMETRY®



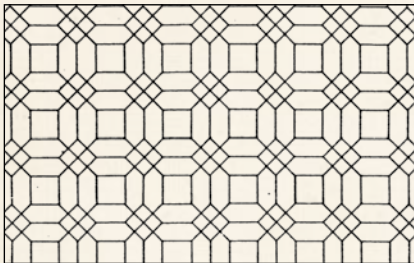
Pattern #7

74.5% SYMETRY® 25.5% SQUARES



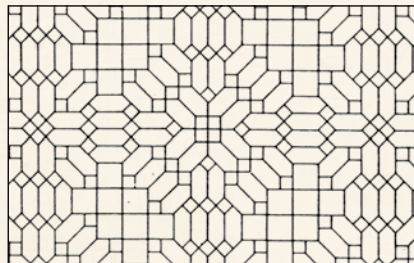
Grand Parquet Pattern

66.2% SYMETRY® 33.8% SQUARES



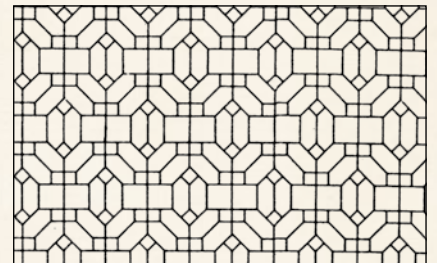
Venetian Parquet Pattern

83% SYMETRY® 17% SQUARES



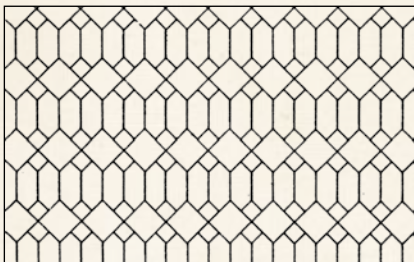
Regency Pattern

83% SYMETRY® 17% SQUARES



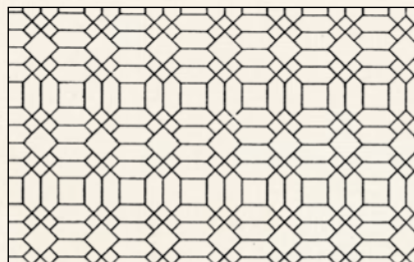
Interpace Pattern

78.5% SYMETRY® 21.5% SQUARES



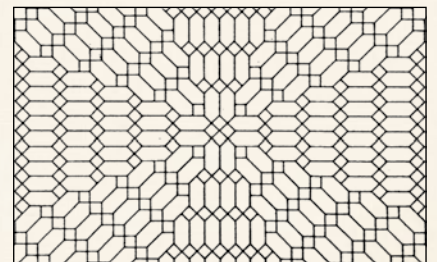
Embassy Row Pattern

71% SYMETRY® 29% SQUARES



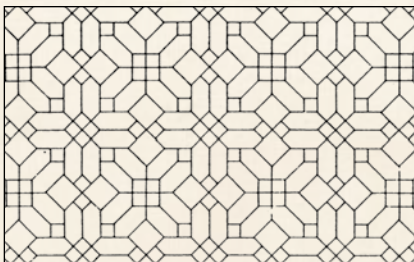
Georgian Parquet Pattern

78.5% SYMETRY® 21.5% SQUARES



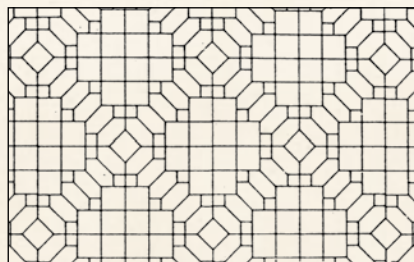
Rondolais Pattern

100% SYMETRY®



Palace Parquet Pattern

83% SYMETRY® 17% SQUARES



Pattern R.S.

53% SYMETRY® 47% SQUARES

Approximate Scale: 1/4" = 1'
(Percentages in Square Feet)

HOLLAND 4x8





RUSTIC BLEND



ANTIQUE BLEND



AUTUMN BLEND



FOREST BLEND



SANDSTONE BLEND



WALNUT BLEND



CHARCOAL BLEND



LIMESTONE BLEND



MAPLEWOOD BLEND



MOSSY OAK BLEND

HOLLAND 4x8 – BURGUNDY BLEND AND BUCKSKIN ▲



HOLLAND 4x8 – WALNUT BLEND ▲



HOLLAND 4x8

Units per sq. ft.: 4.5
 Sq. ft. per cube: 108
 Weight per sq. ft.: 28 lbs
 Weight per cube: 3,024 lbs

Sq. ft. per strap: 18
 Soldier Coursing:
 Per Strap – 27 lineal feet
 Per Cube – 162 lineal feet

COPPER



RED



BUCKSKIN



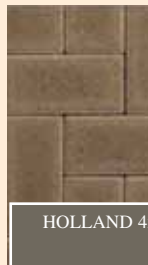
PEWTER



BROWN



SLATE



◀ HOLLAND 4x8 – SANDSTONE BLEND

HOLLAND SERIES

▼ HOLLAND SERIES – WALNUT BLEND





RUSTIC BLEND



WALNUT BLEND



LIMESTONE BLEND



GOLDEN SAGE

HOLLAND 4x8

2³/₈" thick
 Units per sq. ft.: 4.5
 Sq. ft. per cube: 108
 Weight per sq. ft.: 28 lbs
 Weight per cube: 3,024 lbs
 Sq. ft. per strap: 18

HOLLAND 12x12

2³/₈" thick
 Units per sq. ft.: 1.00
 Sq. ft. per cube: 72
 Weight per sq. ft.: 28 lbs
 Weight per cube: 2,016 lbs
 Sq. ft. per strap: 18

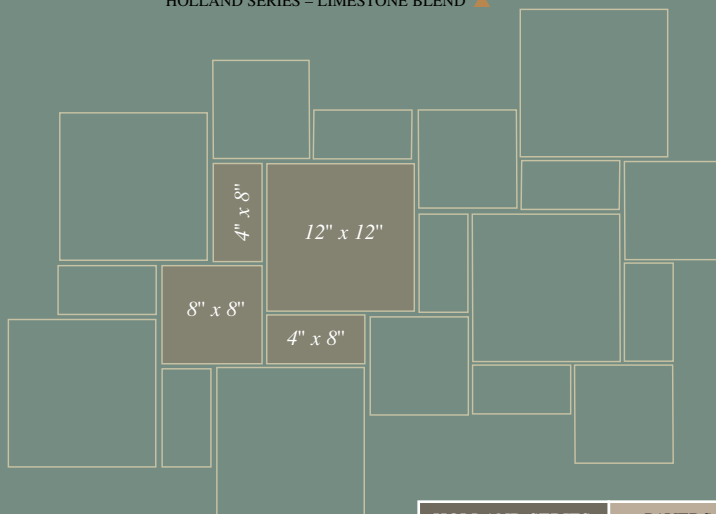
HOLLAND 8x8

2³/₈" thick
 Units per sq. ft.: 2.25
 Sq. ft. per cube: 96
 Weight per sq. ft.: 28 lbs
 Weight per cube: 2,688 lbs
 Sq. ft. per strap: 16

HOLLAND SERIES PATTERN

	Approximate %
4" x 8"	24%
8" x 8"	24%
12" x 12"	52%

HOLLAND SERIES – LIMESTONE BLEND



COBBLESTONE

Create the simple beauty of yesterday with Fendt Cobblestone pavers. Fendt Cobblestone pavers are ideal for driveways, walkways and patios, or wherever simple beauty is top-of-mind.

Fendt Cobblestone pavers feature a classic “key-hole” shape and clean repeating pattern. Available in two colors.



RUSTIC BLEND



WALNUT BLEND



▲ COBBLESTONE – CUSTOM COLOR



COBBLESTONE — 2 $\frac{3}{8}$ " thick

Units per sq. ft.: 3.5
 Sq. ft. per cube: 103
 Weight per sq. ft.: 28 lbs
 Weight per cube: 2,884 lbs
 Sq. ft. per strap: 20.6

◀ COBBLESTONE – CUSTOM COLOR

COBBLESTONE – CUSTOM COLOR ▼



SPECIAL ORDER TEXTURES

DECRO-FACE PAVERS EXPOSED AGGREGATE FINISH



▲ ASPEN



▲ MERLOT



▲ GRANITE

GROUND FACE PAVERS POLISHED SMOOTH FINISH



THE NATURAL LOOK OF FENDT

PAVER COLORS



RUSTIC BLEND



FOREST BLEND



MAPLEWOOD BLEND



PEWTER



ANTIQUÉ BLEND



SANDSTONE BLEND



LIMESTONE BLEND



BUCKSKIN



MOSSY OAK BLEND



WALNUT BLEND



SLATE



RED



AUTUMN BLEND



CHARCOAL BLEND



BROWN



COPPER

OLD WORLD PAVER COLORS



O.W. MOSSY OAK BLEND



O.W. RUSTIC BLEND



O.W. GRINDSTONE BLEND



O.W. ANTIQUE BLEND



O.W. BURGUNDY BLEND



O.W. WALNUT BLEND



O.W. LIMESTONE BLEND



O.W. SEASHELL BLEND



O.W. POLAR ASH

WHEN SELECTING COLOR:

The color samples depicted are only a guide to assist in color selection and should not be used to select final color. Actual colors of pavers and walls may vary, due to the nature of the raw materials used in processing and the variation of reproduction and printing processes. Final color selection should be made from actual paver and wall products.

When installing pavers, use several cubes simultaneously for proper color blending.

SPECTRUM COLLECTION

COLORS

Want a look that's beyond conventional? With color intensity you won't find from any other concrete landscape product manufacturer, Fendt's Spectrum Collection is an upscale option without the upscale cost. See for yourself the difference Spectrum Collection pavers can make in your landscape.



SPECTRUM POLAR ASH



SPECTRUM GOLDEN SAGE



SPECTRUM CANYON BLEND



SPECTRUM WOODLAND BLEND



SPECTRUM BURGUNDY BLEND



SPECTRUM SUNSET BLEND



SPECTRUM SEDONA BLEND



SPECTRUM SEASHELL BLEND



▼ POLAR ASH & WALNUT BLEND

▲ SEASHELL BLEND

▶ BURGUNDY BLEND





FENDT CUSTOM COLOR PROJECTS

Looking for something just a little out of the ordinary? While most wall stone and paver products are stocked in a wide range of common colors, Fendt has the capability to produce custom colors on select jobs. Need your driveway pavers a certain shade of grey or even something bolder? Have a special color that is your backyard patio inspiration? Perhaps you just want something no one else has! Fendt understands.

SYMETRY ▶



▲ SYMETRY

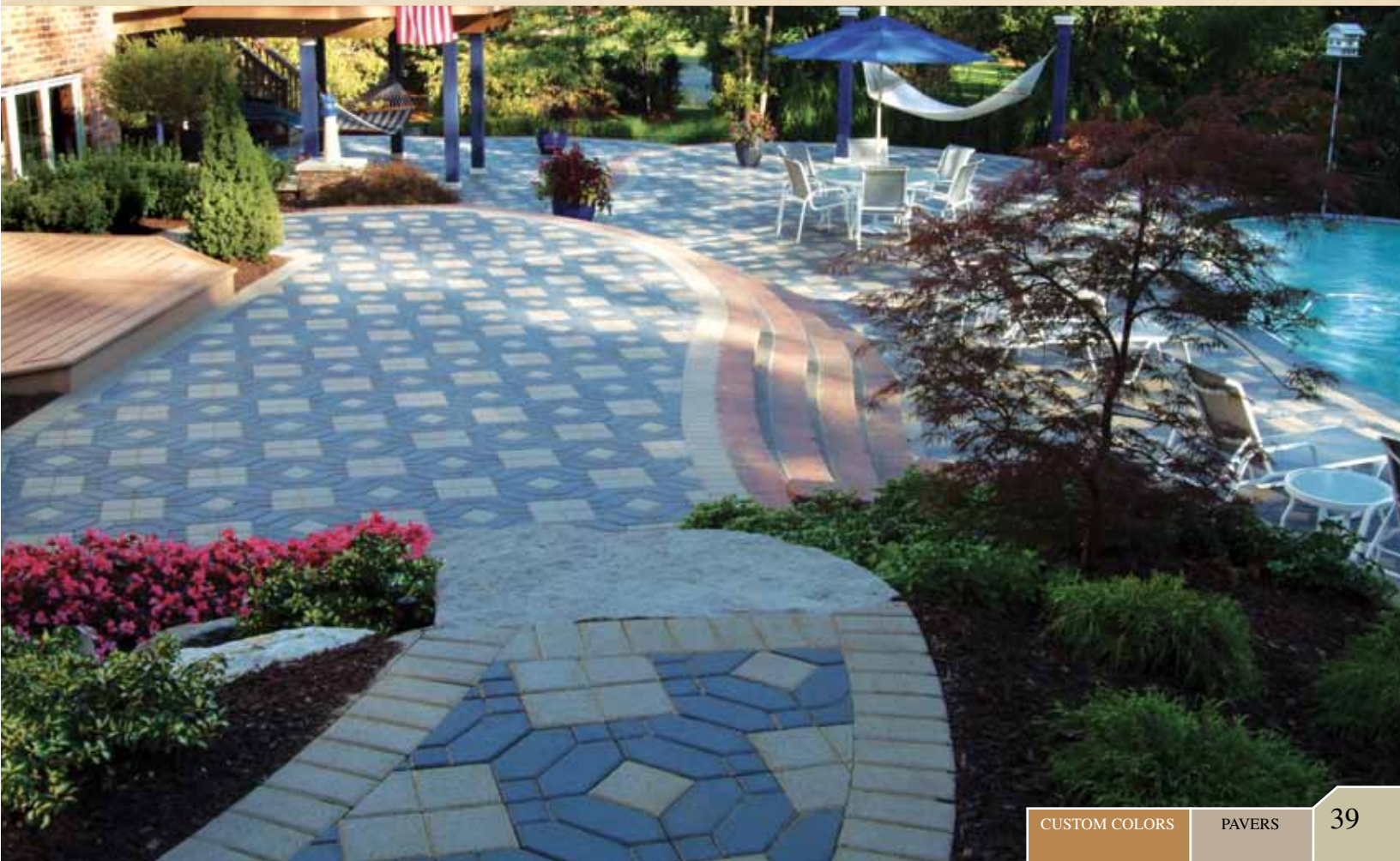


SYMETRY ▶

FENDT IMAGINATION STATION



▼ SYMETRY



SPECIAL ORDER | PAVERS

Create everything from graceful circles to serpentine sidewalks with Fendt Carousel pavers. Basic circles, radiating fans and other flowing patterns are just the start of where Fendt Carousel pavers can take you.

CAROUSEL



▲ CAROUSEL

Fendt's Carousel paver line consists of five architecturally unique shapes for unlimited design possibilities.








◀ CAROUSEL

CAROUSEL ▼



CAROUSEL SERIES

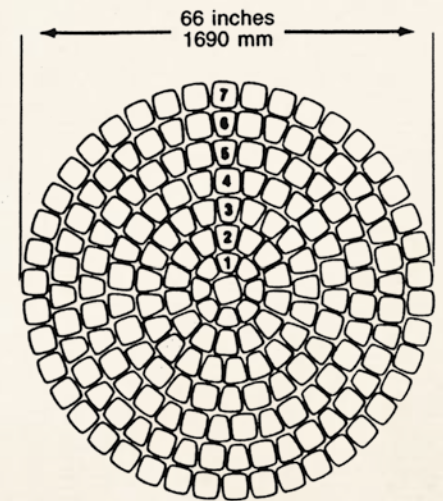
Carousel Stone is comprised of five different shapes – the square, large rectangle, small rectangle, large circle, and small circle. The five shapes are packaged in three different cubes. The Circle Cube contains enough stones to make two complete circles, each approximately 66" in diameter (about 27 sq. ft.). The two remaining cubes (Square and Small Rectangle Cube [SSR] and Large Rectangle Cube [LR]) contain the stones which allow you to expand the circle and create the many different patterns available with the Carousel Stone style.

CIRCLE CUBE (Sold in full and half cubes only - 2 circles per cube)		UNITS PER SQ. FT.	UNITS PER LAYER	SQ. FT. PER LAYER	UNITS PER CUBE	SQ. FT. PER CUBE	SQ. FT. PER STRAP	WEIGHT PER SQ. FT.		
	Square 4½" x 4½" x 2¾"	7.11	33	4.64	198	27.84		33		
	Small Rectangle 4½" x 2¼" x 2¾"	14.12	2	.14	12	.84		33		
	Large Circle 4½" x 4½" x 2¾"	8.3	32	3.85	192	23.10		33		
	Small Circle 3⅜" x 4½" x 2¾"	11.43	3	.26	18	1.56		33		
Totals for Cube			70	8.89	420	53.34		1,760 lbs.		
SQUARE AND SMALL RECTANGLE CUBE (Sold in ratio of 7 squares to 1 small rectangle only)		UNITS PER SQ. FT.	UNITS PER LAYER	SQ. FT. PER LAYER	UNITS PER CUBE	SQ. FT. PER CUBE	SQ. FT. PER STRAP	WEIGHT PER SQ. FT.		
	Square 4½" x 4½" x 2¾"	7.11	63	8.86	378	53.16		33		
	Small Rectangle 4½" x 2¼" x 2¾"	14.12	9	.64	54	3.84		33		
Totals for Cube						57.00		1,881 lbs.		
LARGE RECTANGLE CUBE		UNITS PER SQ. FT.	UNITS PER LAYER	SQ. FT. PER LAYER	UNITS PER CUBE	SQ. FT. PER CUBE	SQ. FT. PER STRAP	WEIGHT PER SQ. FT.	SOLDIER COURSING LINEAL FOOTAGE	
	Large Rectangle 4½" x 6¾" x 2¾"	4.8	48	10	384	80.00	13.33	33	CUBE	STRAP
Totals for Cube						80.00		2,640 lbs.	144	24

Note: The thickness of the Carousel Series is 2¾" (70mm). Please consider when mixing Carousel with other shapes that are 2⅜" (60mm) thick.

Laying A Circle

Row Number	Radius in Inches	Radius in mm	Small Circle Stone	Large Square Stone	Large Rectangle Stone	Large Stone
1	6.11	155	8	—	+1	—
2	10.64	270	—	14	—	—
3	15.17	385	—	21	—	—
4	19.7	500	—	13	+13	—
5	24.23	615	—	16	+17	—
6	28.76	730	—	20	+20	—
7	33.29	845	—	—	42	—
8	37.82	960	—	—	48	or 33
9	42.35	1075	—	—	54	or 37
10	46.88	1190	—	—	62	or 41
11	51.41	1305	—	—	68	or 45
12	55.94	1402	—	—	74	or 49
13	60.47	1535	—	—	80	or 53
14	65.00	1650	—	—	86	or 57
15	69.53	1765	—	—	93	or 62
16	74.06	1880	—	—	99	or 66
17	78.59	1995	—	—	105	or 70
18	83.12	2110	—	—	111	or 74
19	87.65	2225	—	—	118	or 78
20	92.18	2340	—	—	124	or 83



Note: The diagram shows the way in which a circle is formed, using the circle cube through row #7. Beginning with row #8, you may introduce the large rectangle and/or square stone from the other two cubes.

SPECIAL ORDER

PAVERS

Oftentimes, an exciting and unique design gives your landscaping project the distinct visual appeal you're looking for. Fendt Special Order Pavers can give you that distinctive look. Available in several patterns, including Arrowhead, Honeycomb, Dura Stone, Plaza Stone and Omni Stone, these pavers will inspire you to get creative with your landscape.



◀ HONEYCOMB

▲ ARROWHEAD

Create unique and custom designs using Fendt Special Order Pavers. Fendt offers the best customer response times in the industry for its special orders.




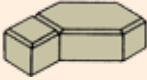
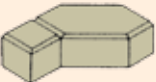




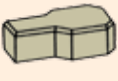



◀ DURA STONE

▼ PLAZA STONE

▼ OMNI STONE



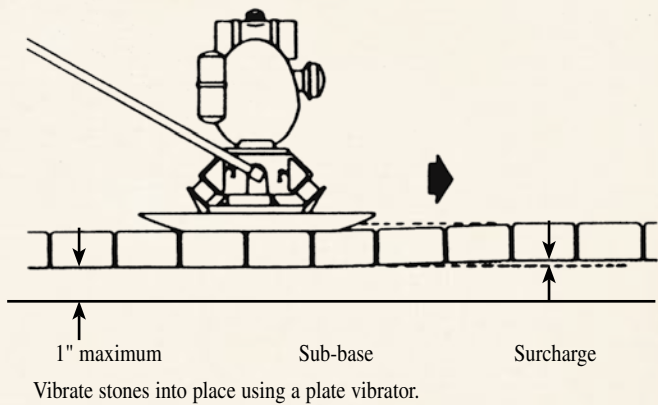
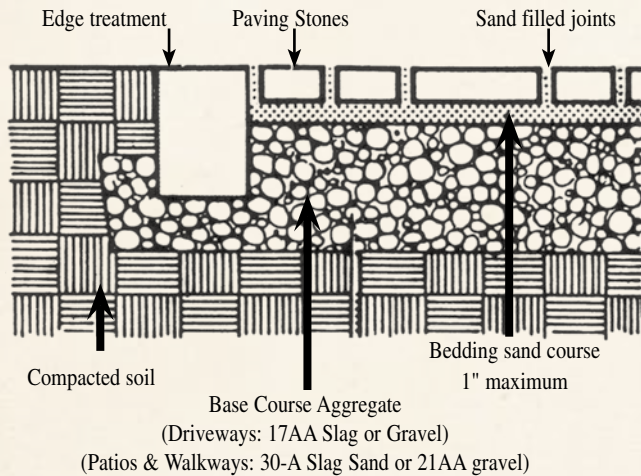
SPECIAL ORDER PAVERS

SHAPE	DESCRIPTION	UNITS PER SQ. FT.	SQ. FT. PER CUBE	WEIGHT PER SQ. FT.	WEIGHT PER CUBE	SQ. FT. PER STRAP
HOLLAND 4x4						
	2 3/8" thick	4.5	108	28	3024	18
HOLLAND 8x8						
	3 1/8" thick	2.25	74.67	37	2763	12.44
HOLLAND 4x8						
	3 1/8" thick	4.5	84	37	3108	16
OLD-STYLE SYMETRY™ (USE IN COMBINATION WITH EURO STONE)						
	2 3/8" thick	3.1	93	28	2604	23.25
NEW SYMETRY™ (USE IN COMBINATION WITH 6" x 6")						
	3 1/8" thick	3.4	65	37	2405	18
6" x 6" (USE IN COMBINATION WITH NEW SYMETRY®)						
	3 1/8" thick	4.1	71.4	37	2642	18
DURA-STONE						
	2 3/8" thick	3.6	100	28	2800	20
	3 1/8" thick	3.6	78	37	2886	
	2 3/8" thick					
	Half-Edger	7.2	37.5	28	2800	
	Full-Edger	3.6	62.5		2800	
	3 1/8" thick					
	Half-Edger	7.2	29.3	37	2886	
	Full-Edger	3.6	48.7		2886	
OMNI STONE						
	2 3/8" thick	3.5	103	28	2884	20.6
	2 3/8" Edger	3.9	104	28	2912	20.8
HONEYCOMB						
	2 3/8" thick	3.1	87	28	2436	14.5
PLAZA STONE						
	2 3/8" thick	2.73	89	28	2492	17.8

PAVER INSTALLATION INSTRUCTIONS

Interlocking Concrete Paving Stones

1. Prepare the site, making a compacted base with 17AA or 21AA slag or gravel between 8" and 12" for driveways, or with 30-A slag sand or 21AA gravel up to 4" to 6" for patios and walkways. Slope as necessary for drainage.
2. Spread a layer of slag sand 1" over compacted base. It is important to maintain consistent thickness of bedding sand. Screed the sand to desired level. Allow for thickness of paver and for compaction of sand (approximately 1/4" to 1/2") to be done in step #5.
3. Lay the paving stones in the patterns you choose, starting the edge stones from an existing line such as a curb or house.
4. Make any necessary cutting of stones with a paving stone splitter or masonry saw.
5. Make a minimum of two passes over paving stones with a plate vibrator.
6. Fill the joints by sweeping dry sand over the paving stones, leaving a thin layer for final vibration. Use slag sand for Carousel Stone, but sweep the paving stones clean before step #7.
7. Vibrate sand into joints and sweep off excess sand. The pavement is now ready for immediate use.



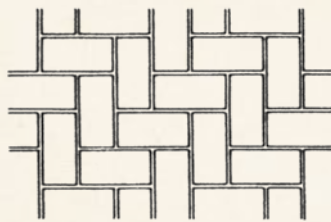
Interlocked Patterns

The Herringbone Patterns

Form the greatest interlock, since the longest continuous joint is only 1 1/2" stones.



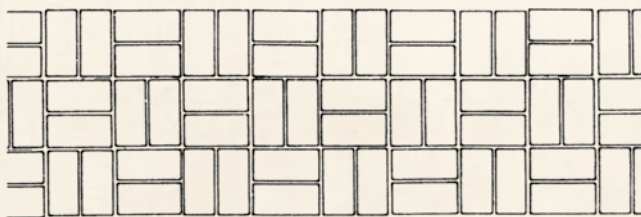
45° Herringbone Pattern



90° Herringbone Pattern

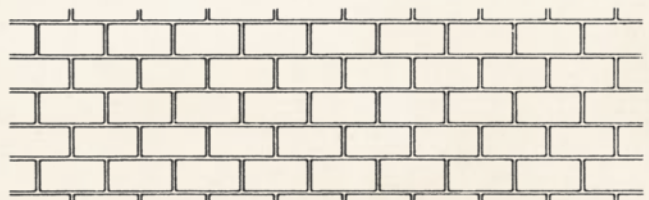
Parquet Pattern

A pattern with unlimited variations.



Runner Bond Pattern

A traditional pattern, that when used for vehicular traffic, should have traffic crossing the stones' length at right angles.



Installation Video

A 15-minute, do-it-yourself installation video covering all the steps involved in installing your own patio or sidewalk, is available for rent and/or purchase. Consult sales staff for details.

FENDT ENVIRONMENTAL PRODUCTS

Professional designers and homeowners alike are concerned with designing and utilizing products that are environmentally friendly. By their very nature, locally-produced concrete products offer the design professional smart solutions to meet and exceed the requirements to qualify for LEED (Leadership in Energy and Environmental Design) certification.

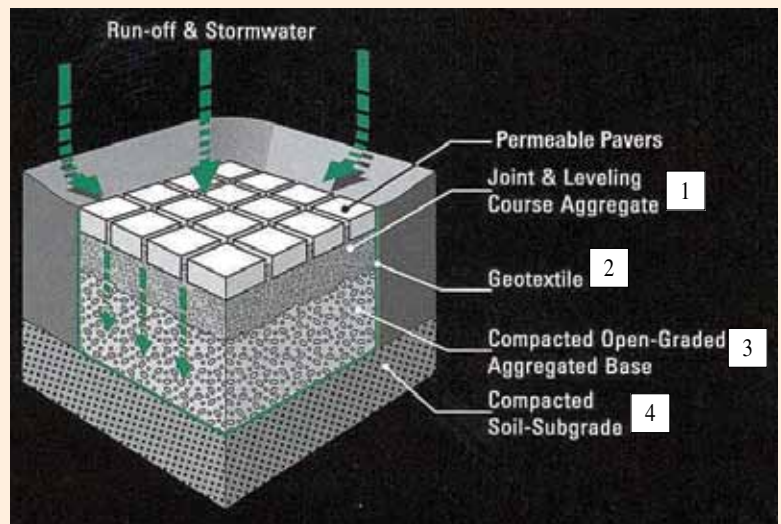
Fendt has provided environmentally-friendly products for years. Monoslab® Grass Pavers offer horizontal stabilization to green areas that can be used for emergency vehicle access and overflow parking areas. Fendt's Geolink product provides slope stabilization and erosion control for riverbanks and drainage areas.

Permeable pavements now offer a new dimension by allowing a higher percentage of rainwater to permeate through the pavement system as opposed to adding to overburdened storm water systems. Fendt's Eco-Brick and Eco-Classic are the perfect solution that can transform any paver parking lot, driveway or pavement area into a beautiful and sustainable pavement that effectively manages storm water.

PERMEABLE PAVERS

When installed as part of the Bio-Aquifer Storm System (BASS™), permeable pavers allow for natural storm water drainage and ground water recharge, making them ecologically sound and economically smart.

A parking lot or street created with BASS™ uses durable permeable components that allow water to flow through, retaining the water runoff and directing it through a series of natural filtration systems before it enters nearby streams or rivers.



- 1 JOINT FILLING BEDDING LAYER
1/8" Crushed Stone Chips
- 2 GEOTEXTILE
Non-woven Geotextile Fabric, Minimum 4 1/2 Ounces Per Square Yard
- 3 BASE COURSE
6A Crushed Aggregate
- 4 SUBGRADE*
Well Compacted Undisturbed Soil

*Subgrade soil type will determine the need for an outlet from base course to bioswale area. Applicable soil types are fine-grain or impervious soils such as clay. See a qualified Fendt representative for bioswale applications.